

# ARNE

DANISH INSPIRED. WESTCOAST LIVING.



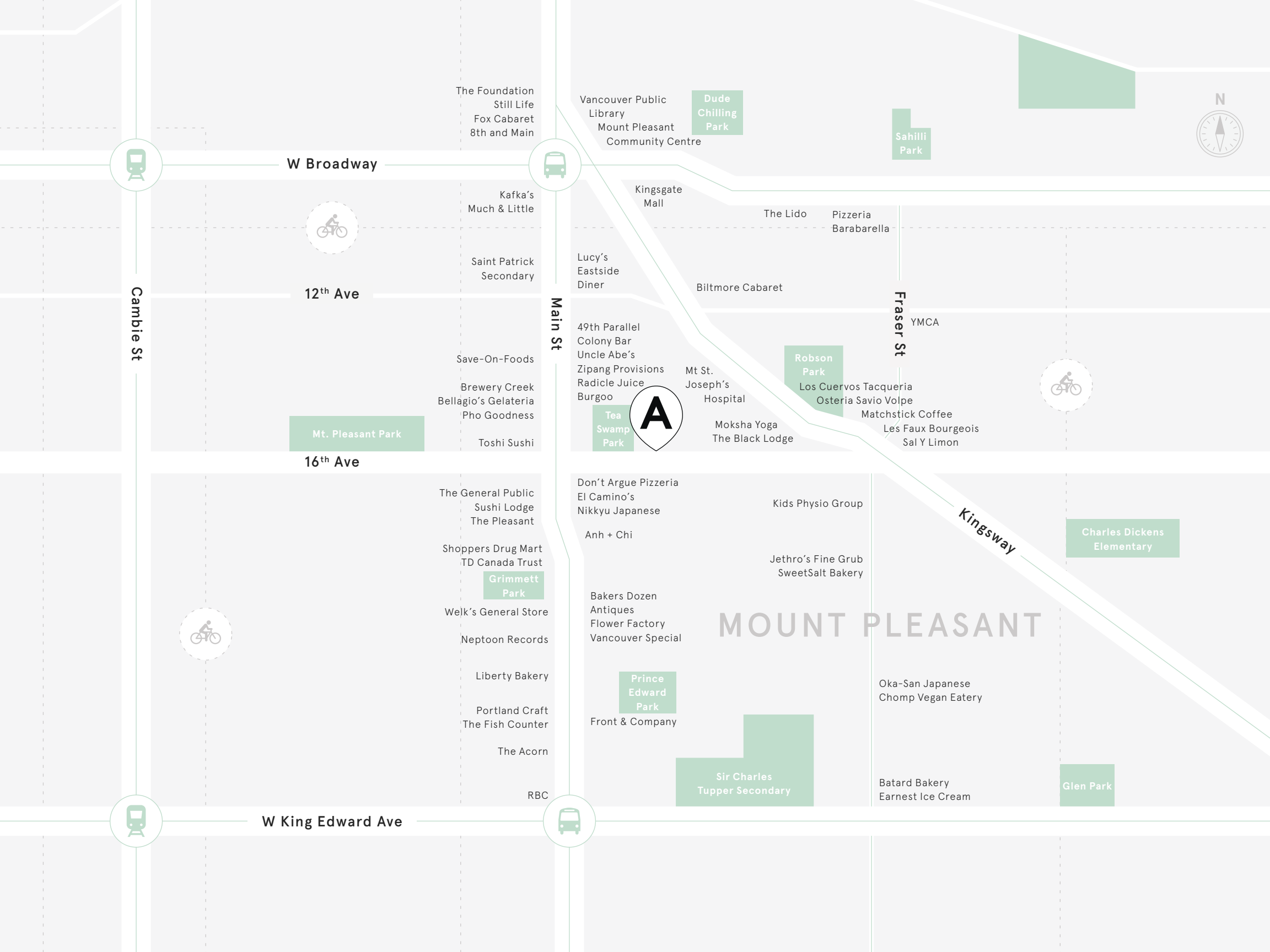


**ARNE** is a boutique collection of **1, 2 and 3 bedroom** townhomes inspired by Danish design and contemporary West Coast elements. Open-concept floor plans unfold for day-to-day life and relaxed entertaining. Imagine sunlight-filled homes with expansive windows on both sides. A distinctive balance of matte and polished surfaces with natural materials and modern fixtures adorn this community for an *inspired living* experience.





Patios and rooftop decks allow for privacy, while the community courtyard provides ample space for sharing and growing. Private entrances offer a welcoming environment to greet your neighbours. Secure underground parking protects vehicles and storage. ARNE breathes integrity and craftsmanship into its surroundings with subtle landscaping that changes colours with the seasons.



W Broadway

12th Ave

16th Ave

W King Edward Ave

Cambie St

Main St

Fraser St

Kingsway

# MOUNT PLEASANT

The Foundation  
Still Life  
Fox Cabaret  
8th and Main

Vancouver Public  
Library  
Mount Pleasant  
Community Centre

Dude  
Chilling  
Park

Sahilli  
Park

Kafka's  
Much & Little

Kingsgate  
Mall

The Lido

Pizzeria  
Barabarella

Saint Patrick  
Secondary

Lucy's  
Eastside  
Diner

Biltmore Cabaret

YMCA

Save-On-Foods  
Brewery Creek  
Bellagio's Gelateria  
Pho Goodness  
Toshi Sushi

49th Parallel  
Colony Bar  
Uncle Abe's  
Zipang Provisions  
Radicle Juice  
Burgoo

Mt. St.  
Joseph's  
Hospital

Robson  
Park

Los Cuervos Tacqueria  
Osteria Savio Volpe

Matchstick Coffee  
Les Faux Bourgeois  
Sal Y Limon

Tea  
Swamp  
Park



Moksha Yoga  
The Black Lodge

The General Public  
Sushi Lodge  
The Pleasant

Don't Argue Pizzeria  
El Camino's  
Nikkyu Japanese

Kids Physio Group

Charles Dickens  
Elementary

Shoppers Drug Mart  
TD Canada Trust

Grimmett  
Park

Ansh + Chi

Jethro's Fine Grub  
SweetSalt Bakery

Welk's General Store

Bakers Dozen  
Antiques  
Flower Factory  
Vancouver Special

# MOUNT PLEASANT

Neptoon Records

Liberty Bakery

Prince  
Edward  
Park

Oka-San Japanese  
Chomp Vegan Eatery

Portland Craft  
The Fish Counter

Front & Company

The Acorn

Sir Charles  
Tupper Secondary

Batard Bakery  
Earnest Ice Cream

RBC

Glen Park



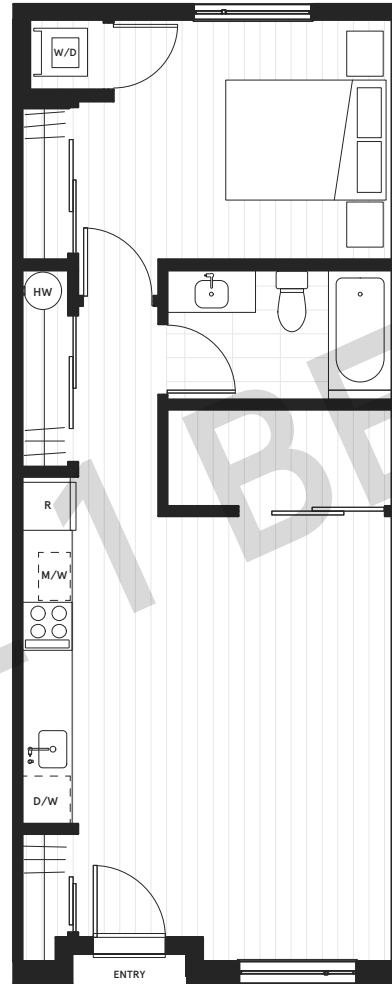




# A2

ARNE

1 Bedroom + Den  
Interior: 647 SF



SAMPLE BEDROOM

South Building  
Level 1



The developer reserves the right to change the information contained herein. Renderings, pricing, finishes, materials, floorplans, sizes, and layouts are subject to change without notice. Floor plans vary. Furniture not included; shown for suggested use of space. This is not an offering for sale. Please see a sales representative and refer to a disclosure statement for more details. E.&O.E. Mondevo (M. Pleasant) Limited Partnership.



# F2

# ARNE

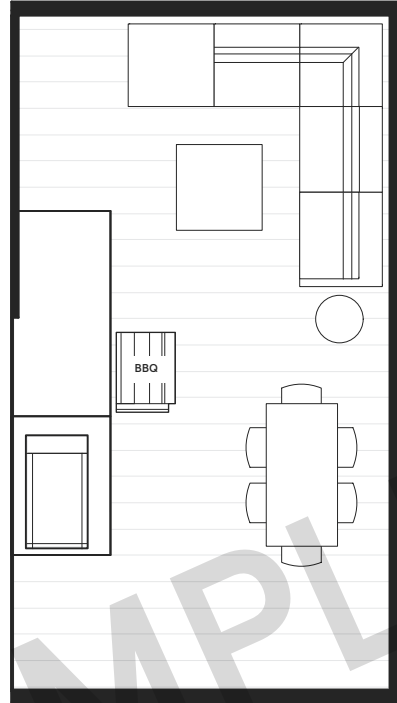
3 Bedroom + Den

Interior: 1240 SF

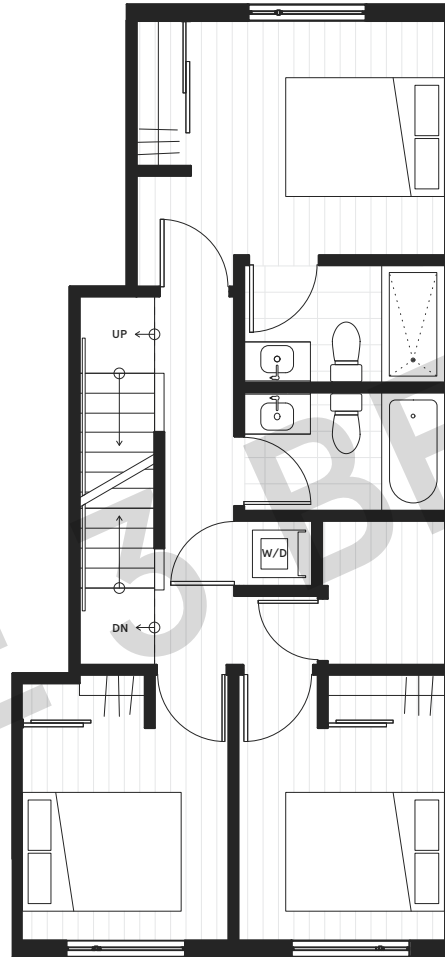
Balcony: 55 SF

Roof Deck: 387 SF

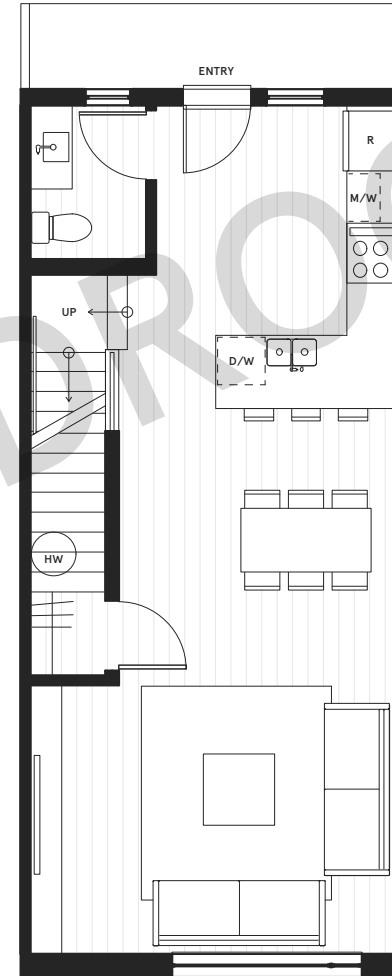
Total Area: 1682 SF



ROOF DECK



SECOND FLOOR



MAIN FLOOR

South Building  
Level 2



The developer reserves the right to change the information contained herein. Renderings, pricing, finishes, materials, floorplans, sizes, and layouts are subject to change without notice. Floor plans vary. Furniture not included; shown for suggested use of space. This is not an offering for sale. Please see a sales representative and refer to a disclosure statement for more details. E.&O.E. Mondevo (M. Pleasant) Limited Partnership.





# FEATURES

# ARNE

## URBAN LIVING

- Boutique building with only 20 homes
- Contemporary architecture influenced by Danish design and West Coast elements
- Spacious townhomes with private balconies and rooftop decks (plan specific)
- Garden-suites with large patios (plan specific)
- Situated on a residential street with easy access to Main Street amenities
- Close proximity to excellent schools, parks, restaurants, cafes and grocery stores
- Easy access to local transit

## CONTEMPORARY INTERIORS

- Interiors by Occupy Design offering two schemes
- Open floorplans with abundant lighting
- Durable wide-plank laminate flooring in main living area
- High performance acoustic underlay and concrete topping between homes to reduce sound transfer
- Front-loading washer/dryer

## KITCHENS

- Modern luxury stainless steel appliances:
  - Blomberg gas cooktop
  - Fulgor Milano wall oven
  - Blomberg Energy Star™ bottom mount fridge/freezer
  - Blomberg Ultra-quiet, Energy Star™, multi-cycle dishwasher
- Engineered stone countertops and ceramic tile backsplash
- Built-in microwave and hood-fan
- Soft-touch close drawers for convenience

## BATHROOMS

- Ensuites with spacious walk-in shower or soaker tub with white surround ceramic tile (plan specific)
- Porcelain tile flooring
- Contemporary white vanity
- Chrome single lever faucet and shower fixtures
- Dual-flush toilet with soft-close seat

## PEACE OF MIND

- Security entry-phone system
- Secure underground parking
- 2/5/10 New Home Warranty by Travelers
- Pre-wired for security alarm system
- Pre-wired for Internet, cable and phone
- Fire sprinklers and hard-wired smoke detectors in all homes

## AMENITIES

- Beautifully landscaped courtyard
- Secure bike room
- Secure outdoor stroller lockers
- Secure private storage lockers available for purchase

## DANSK COLLECTION

- Engineered Hardwood flooring
- In-suite security system
- Walnut veneer lower kitchen cabinetry (plan specific)
- Integrated fridge (plan specific)



The developer reserves the right to change the information contained herein. Renderings, pricing, finishes, materials, floorplans, sizes, and layouts are subject to change without notice. Floor plans vary. Furniture not included; shown for suggested use of space. This is not an offering for sale. Please see a sales representative and refer to a disclosure statement for more details. E.&O.E. Mondevo (M. Pleasant) Limited Partnership.



IF A BUILDING BECOMES ARCHITECTURE,  
THEN IT IS ART.

Arne Jacobsen

arne@mondevo.com

604 800 0882

MONDEVO.COM

